

Materials For Water-Based Inkjet Printing

all the
colors
of life
are on
your
labels

PROFESSIONAL COLOR
PRINTING IN THE OFFICE
ENVIRONMENT



FAST INKJET LABEL SOLUTIONS

Printing small quantities of labels in offset, flexo or any other analog printing technique is expensive. Integrating variable data into tags is difficult. To reduce costs, large volumes of labels must be printed, but this results in unnecessary inventory costs and labels being thrown away.

If there is a broad range of different products you need to label and you want accurate information to be printed on the labels in one go, digital printing can be the best solution for you. It gives you flexibility and enables you to make each label unique. Digital printing is a powerful and cost effective short-run label printing solution, that improves productivity versus outsourcing options and enables businesses to respond to customer and market trends effectively.

As Egen Barcode, we are aware of the opportunities that fast inkjet printing offers to our customers. With our different surface and adhesive alternatives, we offer a wide range of products for fast inkjet printing.

on DEMAND labels

real TIME result

CHEMICAL



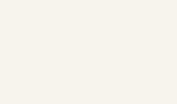
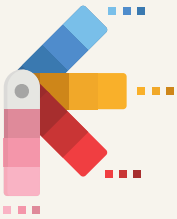
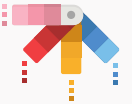
LOGISTICS

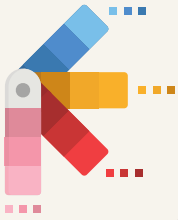


BEVERAGE



COSMETICS





GLOBAL TRENDS IN LABEL PRINTING



VISUAL ID

- Customized labels for marketing and promotional campaigns
- Short run printing
- Reduce label stocks
- Full color printing on demand
- No more unnecessary label stock
- Change the label design whenever you want
- Excellent print quality
- Strong brand image
- Fast printing at low cost
- Easy variable data integration



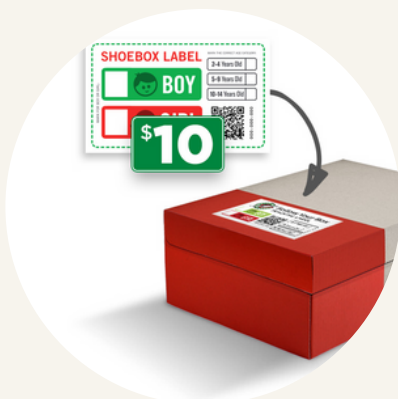
PLANT

MARKETS

- EU Mandatory Tyre Label
- Pharmacy & Laboratory Label
- Chemical Industry Label
- Mattress & Carpet Label
- Food & Beverage Label
- Shoe Box Label
- Wristbands Label
- Transport & Logistics Label
- Gardening Labels
- Ticket & Visual ID
- Manufacturing Label
- Organic Agriculture Label
- Garment Label etc....



CARPET



SHOE BOX

OLD PROCESS (THERMAL TRANSFER PRINTING)

1 Pre-printed colour and static data

2 Over-printing black and variable data



NEW PROCESS (ON-DEMAND PRINTING)

1 Print Color Labels At Once



CL-8000

DEMAND JET MATT THIN FSC ACR



Facestock

A matt white, coated paper with a highly absorbent surface structure specifically designed for waterbased inkjet printing.

The facestock is made from FSC® certified paper (FSC Mix Credit, chain-of-custody number: CU-COC-807907, Licence Code: FSC-C004451)

Basis Weight : 70 g/m² ISO 536
 Caliper : 92 µm ISO 534
 Total Caliper : 161 µm±10% ISO 534

Adhesive

A general purpose permanent, acrylic based adhesive. The adhesive is characterized by a high initial tack, excellent adhesion and good low temperature performance on a wide variety of substrates.

Applications and Use

The product is used in a variety of labelling applications, when the advantages of digital printing: short runs, last minute changes, personalised layouts and fast turn-round full colour printing are required. The product is a result of the emerging demand for short run 'quality' colour print, both in business and at home. The face material is designed to give excellent density, print definition and vivid colours with photo ink. Quick drying and enhanced moisture resistance offer good handling after printing.

The adhesive complies with the European food directives and eglislations, FDA 175.105 and the German recommendations XIV as published by BFR

COMPATIBLE PRINTERS

Afinia	L502-L701-L801-L901	SwiftColor	SCL2000P-SCL4000-SCL8000
Astro Machine	AstroJet™ M1- M1C-L1	TrojanLabel	TrojanLabel T2- T2C T4 -T2L
Epson	C3500-C4000-C6000-C6500-C7500-C831	VIPColor	VP485-VP495-VP610-VP660-VP700-VP750-VP500-VP550
Primera	LX1000-LX2000-LX3000 LX910-LX500-LX600-LX610	iCUBE	iCUBE 1 -2 -3
QuickLabel	Klarol200-QL120X-QL850 QL-E100-QL240- QL800	Colordyne	1800 Series C

CL-8200

DEMAND JET GLOSS NG ACR



Facestock

A white, high gloss, coated paper with a highly absorbent surface structure specifically designed for waterbased ink jet printing. Gives excellent colour reproduction and bright, vivid colours.

Basis Weight : 88 g/m² ISO 536
 Caliper : 106 µm ISO 534
 Total Caliper : 180 µm±10% ISO 534

Adhesive

A general purpose permanent, acrylic based adhesive. The adhesive is characterized by a high initial tack, excellent adhesion and good low temperature performance on a wide variety of substrates.

Applications and Use

The product is used in a variety of labelling applications, when the advantages of digital printing: short runs, last minute changes, personalised layouts and fast turn-round full colour printing are required. The product is a result of the emerging demand for short run 'quality' colour print, both in business and at home. The face material is designed to give excellent density, print definition and vivid colours with photo ink. Quick drying and enhanced moisture resistance offer good handling after printing.

The adhesive complies with the European food directives and legislations, FDA 175.105 and the German recommendations XIV as published by BFR.

COMPATIBLE PRINTERS

Afinia	L502-L701-L801-L901	SwiftColor	SCL2000P-SCL4000-SCL8000
Astro Machine	AstroJet™ M1- M1C-L1	TrojanLabel	TrojanLabel T2- T2C T4 -T2L
Epson	C3500-C4000-C6000-C6500-C7500-C831	VIPColor	VP485-VP495-VP610-VP660-VP700-VP750-VP500-VP550
Primera	LX1000-LX2000-LX3000 LX910-LX500-LX600-LX610	iCUBE	iCUBE 1 -2 -3
QuickLabel	Klarol200-QL120X-QL850 QL-E100-QL240- QL800	Colordyne	1800 Series C



CL-8202

DEMAND JET GLOSS FSC HMA



Facestock

A white, high gloss, coated paper with a highly absorbent surface structure specifically designed for waterbased ink jet printing. Gives excellent colour reproduction and bright, vivid colours.

The facestock is made from FSC® certified paper (FSC Mix Credit, chain-of-custody number: CU- OC-807907, Licence Code: FSC-C004451)

Basis Weight : 86 g/m² ISO 536
 Caliper : 102 µm ISO 534
 Total Caliper : 166 µm±10% ISO 534

Adhesive

A general purpose permanent, rubber based adhesive..
 The adhesive features excellent tack and adhesion on a wide variety of substrates, including apolar, slightly rough and curved substrates. Particularly good performance at lower temperatures, e.g. labeling of chilled products.

Applications and Use

The product is used in a variety of labelling applications, when the advantages of digital printing: short runs, last minute changes, personalised layouts and fast turnaround full colour printing are required.

The adhesive features excellent tack and adhesion on a wide variety of substrates, including apolar, slightly rough and curved substrates.

The adhesive complies with the European food directives and legislations, FDA 175.105 and the German recommendations XXI as published by BfR.

COMPATIBLE PRINTERS

Afinia	L502-L701-L801-L901	SwiftColor	SCL2000P-SCL4000-SCL8000
Astro Machine	AstroJet™ M1- M1C-L1	TrojanLabel	TrojanLabel T2- T2C T4 -T2L
Epson	C3500-C4000-C6000-C6500-C7500-C831	VIPColor	VP485-VP495-VP610-VP660-VP700-VP750-VP500-VP550
Primera	LX1000-LX2000-LX3000 LX910-LX500-LX600-LX610	iCUBE	iCUBE 1 -2 -3
QuickLabel	Kiari200-QL120X-QL850 QL-E100-QL240- QL800	Colordyne	1800 Series C

CL-8300

WBIJ PP100 MATT WHITE ACR



Facestock

A matt white cavitated polypropylene film with highly absorbent surface structure specifically designed for water-based inkjet printing.

Basis Weight : 69 g/m² ISO 536
 Caliper : 100 µm ISO 534
 Total Caliper : 173 µm±10% ISO 534

Adhesive

A general purpose permanent, acrylic based adhesive.
 It is a clear permanent adhesive featuring excellent UV resistance and weatherability together with good adhesion performance, even on apolar substrates.

Applications and Use

The product is used in a variety of labelling applications, when the advantages of digital printing: short runs, last minute changes, personalised layouts and fast turn-round full colour printing are required. The product is a result of the emerging demand for short run colour print, both in business and at home.

The face material is designed to give excellent density, print definition and vivid colours with photo ink. Quick drying and enhanced moisture resistance offer good handleability after printing.

Adhesive complies with European food regulation 1935/2004/EC, with the German Recommendation (BfR) XIV and with FDA § 175.105. It

COMPATIBLE PRINTERS

Afinia	L502-L701-L801-L901	SwiftColor	SCL2000P-SCL4000-SCL8000
Astro Machine	AstroJet™ M1- M1C-L1	TrojanLabel	TrojanLabel T2- T2C T4 -T2L
Epson	C3500-C4000-C6000-C6500-C7500-C831	VIPColor	VP485-VP495-VP610-VP660-VP700-VP750-VP500-VP550
Primera	LX1000-LX2000-LX3000 LX910-LX500-LX600-LX610	iCUBE	iCUBE 1 -2 -3
QuickLabel	Kiari200-QL120X-QL850 QL-E100-QL240- QL800	Colordyne	1800 Series C

CL-8301

WBIJ PP90 MATT WHITE TYR



Facestock

A matt white polypropylene with highly absorbent surface structure specifically designed for water-based inkjet printing.

Basis Weight : 58 g/m² ISO 536
 Caliper : 90 µm ISO 534
 Total Caliper : 171 µm±10% ISO 534

Adhesive

A special purpose permanent, rubber based adhesive. The aggressive nature of the adhesive provides excellent performance on rough or apolar substrates, as well as at low temperatures.

Applications and Use

The product is used in a variety of labelling applications, when the advantages of digital printing: short runs, last minute changes, personalised layouts and fast turn-round full colour printing are required. The product is a result of the emerging demand for short run colour print. The face material is designed to give excellent density, print definition and vivid colours with good moisture resistance and quick drying. Printing:- dye-based ink-pigment-based ink- roll-to-roll applications

Labels with the aggressive adhesive TYR are used on rough or difficult substrates, such as rubber goods, shoes, rugs and carpets, as well as on packaging materials like cardboard, wood, fibre drums and plastic containers (e.g. HDPE and Polypropylene drums).

The adhesive complies with the European food directives and legislations, FDA 175.105 and the German recommendations XXI as published by BfR

COMPATIBLE PRINTERS

Afinia	L502-L701-L801-L901	SwiftColor	SCL2000P-SCL4000-SCL8000
Astro Machine	AstroJet™ M1- M1C-L1	TrojanLabel	TrojanLabel T2- T2C T4 -T2L
Epson	C3500-C4000-C6000-C6500-C7500-C831	VIPColor	VP485-VP495-VP610-VP660-VP700-VP750-VP500-VP550
Primera	LX1000-LX2000-LX3000 LX910-LX500-LX600-LX610	iCUBE	iCUBE 1 -2 -3
QuickLabel	KiariQ200-QL120X-QL850 QL-E100-QL240- QL800	Colordyne	1800 Series C

CL-8400

WBIJ PP90 GLOSS WHITE ACR



Facestock

A glossy white polypropylene with highly absorbent surface structure specifically designed for water-based inkjet printing.

Basis Weight : 74 g/m² ISO 536
 Caliper : 90 µm ISO 534
 Total Caliper : 154 µm±10% ISO 534

Adhesive

A general purpose permanent, acrylic based adhesive. It is a clear permanent adhesive featuring excellent UV resistance and weatherability together with good adhesion performance, even on apolar substrates.

Applications and Use

The product is used in a variety of labelling applications short runs, last minute changes, personalised and customized designs are used. The product is a result of the emerging demand for short run colour print, both in business and at home. The face material is designed to give excellent density, print definition and vivid colours with pigment and dye based inks. Quick drying and enhanced moisture resistance ensure the product is suitable for roll-to-roll applications.

Adhesive complies with European food regulation 1935/2004/EC, with the German Recommendation (BfR) XIV

COMPATIBLE PRINTERS

Afinia	L502-L701-L801-L901	SwiftColor	SCL2000P-SCL4000-SCL8000
Astro Machine	AstroJet™ M1- M1C-L1	TrojanLabel	TrojanLabel T2- T2C T4 -T2L
Epson	C3500-C4000-C6000-C6500-C7500-C831	VIPColor	VP485-VP495-VP610-VP660-VP700-VP750-VP500-VP550
Primera	LX1000-LX2000-LX3000 LX910-LX500-LX600-LX610	iCUBE	iCUBE 1 -2 -3
QuickLabel	KiariQ200-QL120X-QL850 QL-E100-QL240- QL800	Colordyne	1800 Series C



CL-8401

WBIJ PP90 GLOSS WHITE FSC HMA



Facestock

A glossy white polypropylene with highly absorbent surface structure specifically designed for water-based inkjet printing.

The facestock is made from FSC® certified paper (FSC Mix Credit, chain-of-custody number: CU-OC-807907, Licence Code: FSC-C004451)

Basis Weight : 74 g/m² ISO 536
Caliper : 90 µm ISO 534
Total Caliper : 159 µm±10% ISO 534

Adhesive

A general purpose permanent, rubber based adhesive. The adhesive features excellent tack and adhesion on a wide variety of substrates, including apolar, slightly rough and curved substrates. Particularly good performance at lower temperatures, e.g. labeling of chilled products.

Applications and Use

The product is used in a variety of labelling applications, when the advantages of digital printing: short runs, last minute changes, personalised layouts and fast turn-round full colour printing are required. The product is a result of the emerging demand for short run colour print.

The adhesive complies with the European food directives and legislations, FDA 175.105 and the German recommendations XXI as published by BfR.

COMPATIBLE PRINTERS

Afinia	L502-L701-L801-L901	SwiftColor	SCL2000P-SCL4000-SCL8000
Astro Machine	AstroJet™ M1- M1C-L1	TrojanLabel	TrojanLabel T2- T2C T4 -T2L
Epson	C3500-C4000-C6000-C6500-C7500-C831	VIPColor	VP485-VP495-VP610-VP660-VP700-VP750-VP500-VP550
Primera	LX1000-LX2000-LX3000 LX910-LX500-LX600-LX610	iCUBE	iCUBE 1 -2 -3
QuickLabel	Kiara!200-QL120X-QL850 QL-E100-QL240- QL800	Colordyne	1800 Series C

Facestock

A clear polypropylene with a highly absorbent surface structure specifically designed for water-based inkjet printing.

The facestock is made from FSC® certified paper (FSC Mix Credit, chain-of-custody number: CU-OC-807907, Licence Code: FSC-C004451)

Basis Weight : 79 g/m² ISO 536
Caliper : 80 µm ISO 534
Total Caliper : 149 µm±10% ISO 534

Adhesive

A general purpose permanent, acrylic based adhesive. It is a clear permanent adhesive featuring excellent UV resistance and weatherability together with good adhesion performance, even on apolar substrates.

Applications and Use

The product is used in a variety of labelling applications, when the advantages of digital printing: short runs, last minute changes, personalised layouts and fast turn-round full colour printing are required. The product is a result of the emerging demand for short run colour print, both in business and at home.

The face material is designed to give excellent density, print definition and vivid colours with photo ink. Quick drying and enhanced moisture resistance offer good handleability after printing.

Adhesive complies with European food regulation 1935/2004/EC, with the German Recommendation (BfR) XIV and with FDA § 175.105.

COMPATIBLE PRINTERS

Afinia	L502-L701-L801-L901	SwiftColor	SCL2000P-SCL4000-SCL8000
Astro Machine	AstroJet™ M1- M1C-L1	TrojanLabel	TrojanLabel T2- T2C T4 -T2L
Epson	C3500-C4000-C6000-C6500-C7500-C831	VIPColor	VP485-VP495-VP610-VP660-VP700-VP750-VP500-VP550
Primera	LX1000-LX2000-LX3000 LX910-LX500-LX600-LX610	iCUBE	iCUBE 1 -2 -3
QuickLabel	Kiara!200-QL120X-QL850 QL-E100-QL240- QL800	Colordyne	1800 Series C

CL-8500

WBIJ PP90 CLEAR FSC ACR



CL-8551

WBIJ PEHD MATT WHITE FSC HMA



Facestock

A matt white, high density polyethylene film with a specific inkjet receptive coating for dye water based inks and good water resistance

The facestock is made from FSC® certified paper (FSC Mix Credit, chain-of-custody number: CU- OC-807907, Licence Code: FSC-C004451)

Basis Weight : 68 g/m² ISO 536
 Caliper : 87 µm ISO 534
 Total Caliper : 153 µm±10% ISO 534

Adhesive

A general purpose permanent, rubber based adhesive. The adhesive features excellent tack and adhesion on a wide variety of substrates, including apolar, slightly rough and curved substrates. Particularly good performance at lower temperatures, e.g. labeling of chilled products.

Applications and Use

The product is specially designed for use in inkjet printers however due to the large variation of printers and inks we strongly recommend preliminary printingtest to optimize the printing quality.

The adhesive is suitable for contact with dry and moist, non-fatty foodstuffs

COMPATIBLE PRINTERS

Afinia	L502-L701-L801-L901	SwiftColor	SCL2000P-SCL4000-SCL8000
Astro Machine	AstroJet™ M1- MIC-L1	TrojanLabel	TrojanLabel T2- T2C T4 -T2L
Epson	C3500-C4000-C6000-C6500-C7500-C831	VIPColor	VP485-VP495-VP610-VP660-VP700-VP750-VP500-VP550
Primera	LX1000-LX2000-LX3000 LX910-LX500-LX600-LX610	iCUBE	iCUBE 1 -2 -3
QuickLabel	KiaraI200-QL120X-QL850 QL-E100-QL240- QL800	Colordyne	1800 Series C

CL-8710

WINE MARTELE BLANC FSC HMA



Facestock

A white, matt woodfree printing paper with an uncoated look and feel and a 'hammered' tactile embossed finish. Paper is optimized for a water-based Inkjet printing that ensures excellent colour reproduction with bright and vivid colors. Wet strength and fungicidal treatments.

The facestock is made from FSC® certified paper (FSC Mix Credit, chain-of-custody number: CU- OC-807907, Licence Code: FSC-C004451)

Basis Weight : 79 g/m² ISO 536
 Caliper : 80 µm ISO 534
 Total Caliper : 149 µm±10% ISO 534

Adhesive

A general purpose permanent, rubber based adhesive for the wine industry. The adhesive features excellent tack and adhesion on a wide variety of substrates, including apolar, and slightly rough substrates.

Applications and Use

The product is used in a variety of labelling applications, when the advantages of digital printing: short runs, last minute changes, personalised layouts and fast turn-round full colour printing are required. The product is designed for Wine labelling, but is also suitable for primary labelling of high and premium goods eg: spirits, specialist foods. For more water/moisture resistance, it is strongly recommended to use water-based Inkjet technology with pigment-based inks. Due to the nature of the ink, dyebased inks tend to dissolve in water. The adhesive is suitable for contact with dry and moist, non-fatty foodstuffs.

COMPATIBLE PRINTERS

Afinia	L502-L701-L801-L901	SwiftColor	SCL2000P-SCL4000-SCL8000
Astro Machine	AstroJet™ M1- MIC-L1	TrojanLabel	TrojanLabel T2- T2C T4 -T2L
Epson	C3500-C4000-C6000-C6500-C7500-C831	VIPColor	VP485-VP495-VP610-VP660-VP700-VP750-VP500-VP550
Primera	LX1000-LX2000-LX3000 LX910-LX500-LX600-LX610	iCUBE	iCUBE 1 -2 -3
QuickLabel	KiaraI200-QL120X-QL850 QL-E100-QL240- QL800	Colordyne	1800 Series C





CL-8712

WBIJ PET65 GOLD FSC ACR



Facestock

A gold polyester film with highly glossy and absorbent surface structure specifically designed for water-based inkjet printing.

The facestock is made from FSC® certified paper (FSC Mix Credit, chain-of-custody number: CU- OC-807907, Licence Code: FSC-C004451)

Basis Weight : 59 g/m² ISO 536
Caliper : 53 µm ISO 534
Total Caliper : 137 µm±10% ISO 534

Adhesive

A general purpose permanent, acrylic based adhesive. It is a clear permanent adhesive featuring excellent UV resistance and weatherability together with good adhesion performance, even on apolar substrates.

Applications and Use

The product is used in a variety of labelling applications, when the advantages of digital printing: short runs, last minute changes, personalised layouts and fast turn-round full colour printing are required. The product is a result of the emerging demand for short run colour print, both in business and at home. The face material is designed to give very good density, print definition and vivid colours. Adhesive complies with European food regulation 1935/2004/EC, with the German Recommendation (BfR) XIV and with FDA § 175.105

COMPATIBLE PRINTERS

Afinia	L502-L701-L801-L901	SwiftColor	SCL2000P-SCL4000-SCL8000
Astro Machine	AstroJet™ M1- M1C-L1	TrojanLabel	TrojanLabel T2- T2C T4 -T2L
Epson	C3500-C4000-C6000-C6500-C7500-C831	VIPColor	VP485-VP495-VP610-VP660-VP700-VP750-VP500-VP550
Primera	LX1000-LX2000-LX3000 LX910-LX500-LX600-LX610	iCUBE	iCUBE 1 -2 -3
QuickLabel	Kirol200-QL120X-QL850 QL-E100-QL240- QL800	Colordyne	1800 Series C

CL-8713

WBIJ PET SILVER MATT FSC ACR



Facestock

A matt silver polyester film with an absorbent surface structure specifically designed for water-based inkjet printing.

The facestock is made from FSC® certified paper (FSC Mix Credit, chain-of-custody number: CU- OC-807907, Licence Code: FSC-C004451)

Basis Weight : 92 g/m² ISO 536
Caliper : 74 µm ISO 534
Total Caliper : 146 µm±10% ISO 534

Adhesive

A general purpose permanent, rubber based adhesive for the wine industry. The adhesive features excellent tack and adhesion on a wide variety of substrates, including apolar, and slightly rough substrates.

Applications and Use

The product is used in a variety of labelling applications, when the advantages of digital printing: short runs, last minute changes, personalised layouts and fast turn-round full colour printing are required. The product is a result of the emerging demand for short run colour print, both in business and at home. The face material is designed to give very good density, print definition and vivid colours. Adhesive complies with European food regulation 1935/2004/EC, with the German Recommendation (BfR) XIV and with FDA § 175.105

COMPATIBLE PRINTERS

Afinia	L502-L701-L801-L901	SwiftColor	SCL2000P-SCL4000-SCL8000
Astro Machine	AstroJet™ M1- M1C-L1	TrojanLabel	TrojanLabel T2- T2C T4 -T2L
Epson	C3500-C4000-C6000-C6500-C7500-C831	VIPColor	VP485-VP495-VP610-VP660-VP700-VP750-VP500-VP550
Primera	LX1000-LX2000-LX3000 LX910-LX500-LX600-LX610	iCUBE	iCUBE 1 -2 -3
QuickLabel	Kirol200-QL120X-QL850 QL-E100-QL240- QL800	Colordyne	1800 Series C



Customized RFID Solutions for Inkjet Labels

We use our expertise to find solutions to your RFID embedded inkjet labeling challenges. We manufacture inkjet labels with RFID embedded chip with our own RFID Chip Application Machine. Lets customize inkjet labels together and connect to the world of RFID.



EGEN

barkod etiket ve prom. san. tic. ltd. sti.

mooove
RFID Label



Ikitelli O.S.B. Mutsan San.Sitesi
10. Blok No.24 Başakşehir /
ISTANBUL / TURKIYE



+90 212 659 15 15



info@egen.com.tr



http:// egen.com.tr